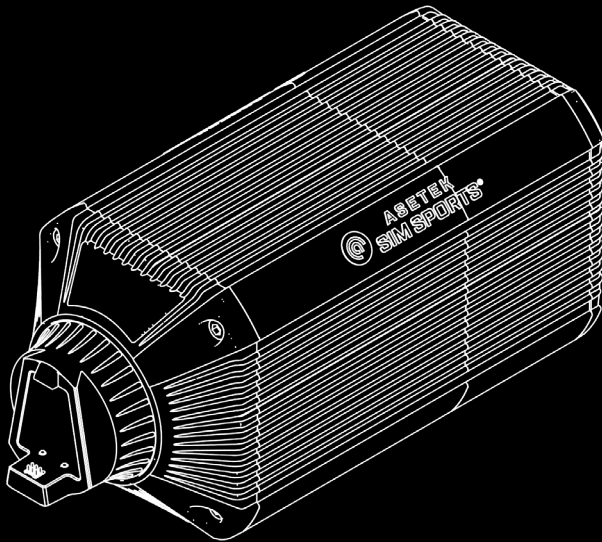


# Direct Drive Wheelbase Manual



**ASETEK**  
**SIM SPORTS®**

**Thank you for purchasing  
the Asetek SimSports® Wheelbase.**

You have made an excellent choice!

We are sure the Asetek SimSports® direct drive wheelbase will help you take your sim racing career to the next level. Whether you are a beginner or an experienced racer, you will now be able to reach ultimate immersion.

Prepare for the sensation of being in a real race car.

---

# Table of contents

Foreword .....	4
About This Document .....	4
Other Relevant Documents .....	5
Symbols Used .....	5
Copyright .....	5
1. Introduction .....	6
1.1 Box contents .....	6
1.2 Videos .....	6
1.3 Manual version .....	6
1.4 Support & Contact .....	6
2. Product .....	7
2.1 Intended Use .....	7
2.2 Reasonably Foreseeable Unintended Use .....	7
2.3 Compatibility .....	8
2.4 General Specifications .....	8
2.5 Warnings and guidelines for safe operation .....	9
2.6 Safe usage instructions .....	10
3. Product Overview .....	10
4. Getting Started .....	11
4.1 Mounting Instructions .....	11
4.2 Getting started .....	12
5. RaceHub™ software .....	13
5.1 RaceHub Download .....	13
5.1.1 RaceHub Installation .....	13
5.1.2 RaceHub Updating .....	13
5.2 RaceHub Introduction .....	13
6. Troubleshooting .....	14
6.1 Spare Parts .....	14
7. Safety .....	15
8. De-commissioning & Sustainability .....	16
8.1 Packaging .....	17
8.2 Product .....	17
9. Declaration of Conformity .....	18



# Foreword

## About This Document

This manual is written for the end-user of the Asetek SimSports® Direct Drive Wheelbase (hereon after: “wheelbase”) and contains all information required to correctly and safely install, use and maintain the following models:

<b>Model Name</b>	<b>WB-1, WB-2</b>
<b>Product Name</b>	<b>Invicta™ Direct Drive Wheelbase 27Nm Forte® Direct Drive Wheelbase 18Nm La Prima™ Direct Drive Wheelbase 12Nm</b>
<b>Product Code</b>	<b>40-020-0020002 40-020-0020003 40-020-0020004</b>


This manual was authored in English. All other languages are translations of the original document.

Please make sure that you have thoroughly read and understood all contents of this manual before installing or using the wheelbase.

If anything in this manual is unclear, please contact Asetek SimSports® Support (available on [www.asetek.com/simsports/support/](http://www.asetek.com/simsports/support/)).

Please note the serial number on your product before contacting the support. The serial number can be found on the bottom of the wheelbase and written here for your convenience:



<b>Serial Number</b>	
<b>Asetek Denmark A/S Assensvej 2 9220 Aalborg East Denmark <a href="http://www.asetek.com">www.asetek.com</a></b>	

## Other Relevant Documents

These documents may assist you in your quest for faster lap times:

- Mounting patterns
  - Software
  - DoC
- and other installation manuals can be found here:  
[www.asetek.com/simsports/knowledge-base/](http://www.asetek.com/simsports/knowledge-base/)

## Symbols Used

Make sure you pay attention to all warnings and symbols on the product and packaging.

## Copyright

The content of this manual is protected by copyright and other international intellectual property laws. The contents of this manual or any parts thereof may only be made public, copied, modified, reproduced, translated with express written permission from Asetek.

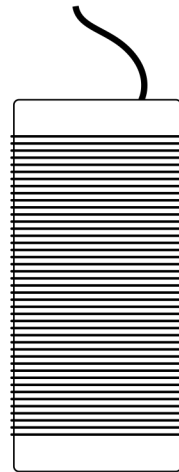
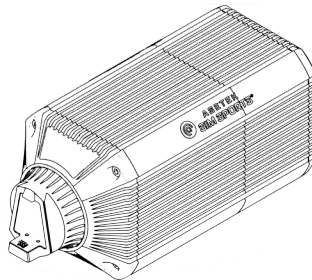
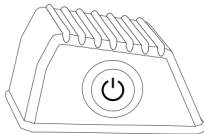
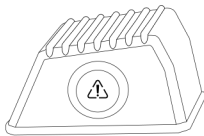
This manual or any parts thereof may only be published, transmitted, displayed, or made available to a third party with express written permission from Asetek SimSports®.

# 1. Introduction

## 1.1 Box Contents

The box contains the following components and accessories:

- Wheelbase
- Power supply
  - Power supply AC-cable (EU)
  - Power supply AC-cable (UK)
  - Power supply AC-cable (US)
- Torque off button (Forte® and Invicta™)
- On/Off button
- USB Type-A to USB Type-C cable (Two (2) meters)



## 1.2 Videos

On the Asetek SimSports® YouTube channel (<https://www.youtube.com/aseteksimsports>), you can find tutorial videos which, in detail, demonstrate numerous ways the wheelbases can be set up and used.

## 1.3 Manual version

This manual is version 1.0.

You will always be able to find the latest version of the manual at:  
[www.asetek.com/simsports/knowledge-base/](http://www.asetek.com/simsports/knowledge-base/)

## 1.4 Support & Contact

Should you stumble upon further questions that are not covered in this manual or any of our detailed instruction videos, we encourage you to contact our friendly support staff at [support@aseteksimsports.com](mailto:support@aseteksimsports.com)

# 2. Product

## 2.1 Intended Use

Thank you for purchasing an Asetek SimSports® wheelbase; you have made an excellent choice! The Asetek SimSports® wheelbase will bring you to the next level of your Sim Racing career. Whether you are a beginning or experienced gamer, you will feel the immersion of being in a real race car while racing the tracks across the globe in the virtual space.

The Asetek SimSports® Wheelbase is designed to be used in competitive sim racing and simulate the feel of a real race car. The wheelbase can be directly connected to any PC with a USB port and is intended to be mounted in a sim racing cockpit. All Asetek SimSports® wheelbases feature our own unique quick release that is as easy as shifting gears – literally. To disconnect the wheel from the base, all you have to do is press the paddle on the wheel and the wheel will be in your hands. Needless to say, we are not relying on wireless signals, batteries that need to be charged, or cables that can break or fall off. Everything is included in our easy-to-use no-play quick release.

The wheelbases are compatible with all Asetek SimSports® wheels. The wheels can be bought in our webshop or at an Asetek SimSports® authorized dealer. Information on the wheels can be found on:

<https://www.asetek.com/simsports/product-category/steering-wheels/>



**The wheelbase is intended for indoor use only**



**Recommended ages 15 and above**

## 2.2 Reasonably Foreseeable Unintended Use

The following is considered misuse and may void the warranty:

- Use of adaptors or extension sets for cables;
- Use of other cables than provided with the product;
- Use in an environment that varies from or exceeds the given environmental conditions;
- Use that varies from or exceeds the given operating conditions;
- Failure to comply with the instructions in this manual;
- Failure to eliminate faults, malfunctions, or defects of the product that impose safety risks;
- Unauthorized removal or modification of parts or safety devices of the product;
- Use of spare parts or accessories that Asetek SimSports® has not approved;
- Mounting and/or use of any parts in a vehicle;
- Operation in a flammable and/or explosive environment.



## 2.3 Compatibility

<b>Platform(s)</b>	PC (Windows 10, 11)
<b>Games</b>	Assetto Corsa Assetto Corsa Competizione DiRT Rally DiRT Rally 2.0 F1 Series iRacing Project Cars 2 rFactor 2 + many other games that accept direct input devices

## 2.4 General Specifications

	La Prima™	Forte®	Invicta™
<b>Asetek SimSports® Quick Release</b>	Wheelbase side only	Wheelbase side only	Wheelbase side only
<b>Max Torque</b>	12 Nm	18 Nm	27 Nm
<b>Max torque slew rate</b>	4 Nm/ms	6,7 Nm/ms	9,4 Nm/ms
<b>Angle sensor</b>	22 bit absolute	22 bit absolute	22 bit absolute
<b>Torque Off button</b>	Not applicable	Included	Included
<b>Power supply</b>	180 W	400 W	400 W
<b>Wheelbase dimensions</b>	133 x 132 x 293 Mm	133 x 132 x 293 Mm	133 x 132 x 327 Mm
<b>Mounting holes</b>	T-nuts M6 x 4 pcs threaded hole	T-nuts M6 x 4 pcs threaded hole	T-nuts M6 x 4 pcs threaded hole
<b>Mounting hole pattern width</b>	87 mm	87 mm	87 mm
<b>Mounting hole pattern length</b>	Variable length 30 mm to 160 mm	Variable length 30 mm to 160 mm	Variable length 30 mm to 190 mm
<b>Wheelbase weight</b>	8.5 Kg	8.5 Kg	11.3 Kg
<b>Standard warranty</b>	24 months	24 months	24 months
<b>Operating Temperatures</b>	15°C to 35°C, room temperature	15°C to 35°C, room temperature	15°C to 35°C, room temperature



## 2.5 Warnings and guidelines for safe operation

- Asetek SimSports® wheelbases are intended for professional use. Usage under other conditions is under user's own responsibility.
- Do not grab, hold, or insert fingers and/or objects to the rotating parts in a way where letting go immediately is not always possible.
- When operating the quick release, always disable torque by pressing the Torque off button before removing or attaching a wheel.
- Do not enable torque before a wheel has been securely attached.
- On La Prima and Tony Kanaan Series do not operate the quick release while the wheelbase is powered ON. Do not turn ON the wheelbase before a wheel has been securely attached.
- Do not set torque level higher than the level the user can safely hold with a single hand grip.
- If torque gets too high to control safely, let both hands off the wheel and press the Torque off button.
- Preventing motion by the means of RaceHub or simulator software are not reliable ways to prevent motion.
- Wheelbase user must be an adult and physically and mentally fit person.
- Usage of the wheelbase is allowed only by an instructed person who understands and follows the above safety instructions.
- If the wheelbase becomes damaged in any way, stop using it immediately and contact Asetek support or the reseller from who you have bought the wheelbase.
- Using the vibration and force feedback may cause damage to your health.
- Do not open the casing of the wheelbase or the power supply. There are no user serviceable parts inside, and disassembling will void manufacturer's warranty.
- Do not use the wheelbase with a power source other than the power supply packaged with the wheelbase or received from an authorized reseller.
- Do not use the wheelbase with any cables other than the cables packaged with the wheelbase or received from an authorized reseller.
- The wheelbase has magnets which may interfere with pacemakers, defibrillators and programmable shunt valves or other medical devices. Do not put this product close to these medical devices and the person who use any of these medical devices. Consult your doctor before using this product if you have any concerns.
- Asetek SimSports® power supply is not intended to withstand physical stress. Do not damage or mishandle the power supply.
- **Operating environment:**
  - 15°C – 35°C room temperature, non-condensing humidity
  - Do not expose the wheelbase to direct sunlight
  - Indoor use only
- **Rotating high torque parts:**
  - Shaft torque up to 27 Nm
- **Hot surface:**
  - Wheelbase surface temperature may reach 70C or 158F.
  - Sudden rotation / vibration
  - Wheelbase may start producing motion unexpectedly.
  - Please note that the wheelbase can get hot when used which is normal operating procedure.



Rotating shaft  
Rotierende Welle  
Arbre rotatif  
Eje giratorio



High torque  
Hohes Drehmoment  
Couple élevé  
Torque alto

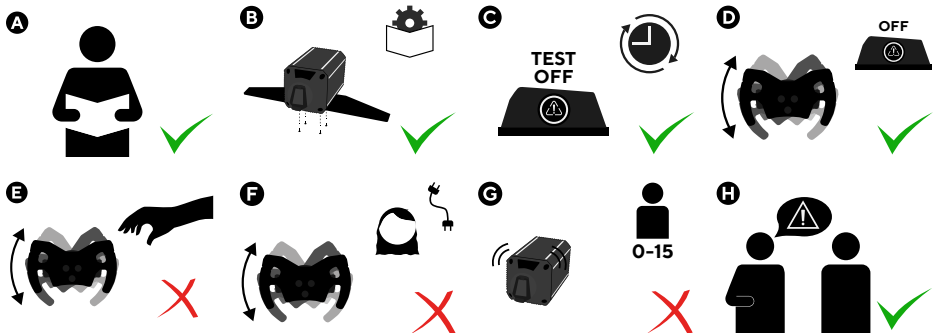


Hot surface  
Heisse Oberfläche  
Surface chaude  
Superficie caliente

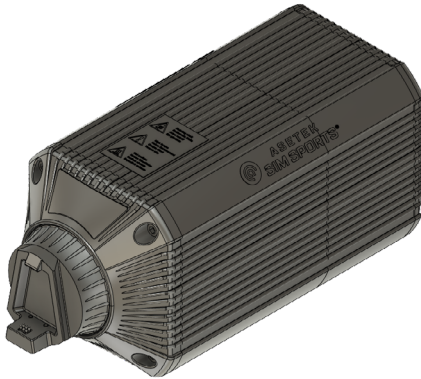
## 2.6 Safe Usage Instructions

- A: Read the user manual before installing and operating the wheelbase.
- B: Mount the wheelbase securely to a rigid platform before use. Use a bracket that is compatible with your Asetek SimSports® wheelbase. Never operate the product without mounting it first.
- C: Test the torque off button before each session (only on Forte and Invicta).
- D: Use the torque off button or power off button to stop and prevent motion.
- E: Keep your hands away from a freely rotating wheel. If the torque gets too high to control safely, let both hands off the wheel and press the torque off button.
- F: Keep hair, cables, clothing, and other loose items clear from the rotating parts.
- G: Children under the age of 15 years are not allowed to use the wheelbase in high torque mode.
- H: Inform other users of the wheelbase about safe usage.

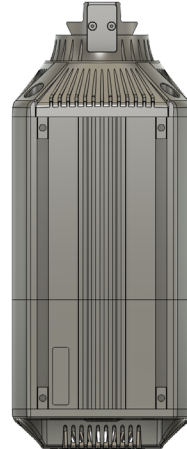
If you are in doubt about any of the above listed items, please reach out to our customer service at [hello@aseteksimsports.com](mailto:hello@aseteksimsports.com) with any questions you may have.



### 3. Product Overview

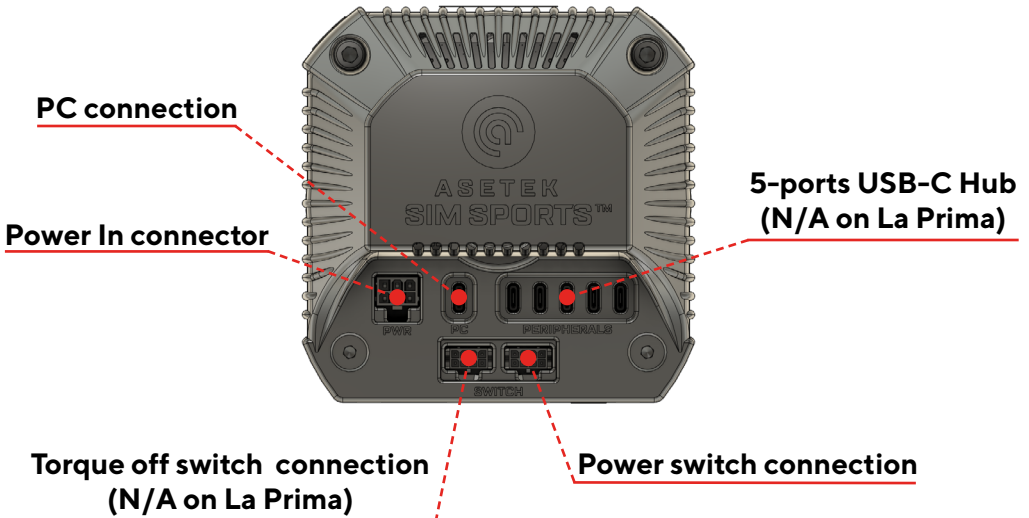


**Front right**



**Bottom**

**Back**



# 4. Getting Started

This section will teach you how to get your wheelbase set up and running. Later in the manual, you will learn more about the software.

## 4.1 Mounting Instructions

The Asetek SimSports® Wheelbases can be mounted in numerous ways depending on your preferences. From the factory the wheelbase is delivered with 4 T-nuts in the bottom of the wheelbase. These T-nuts can slide back and forth in the length of the wheelbase.

Mount the wheelbase motor unit securely to a rigid stable platform (a racing rig with compatible screws is recommended) before operating. User must confirm that the racing rig, table, or other stable surface being used for mounting can handle the weight load (approximately 12kgs / 26 lbs.) and the forceful torque and high velocity rotational motion of the wheel.

We recommend that you mount your wheelbase with an Asetek SimSports wheelbase mount that you can find here:

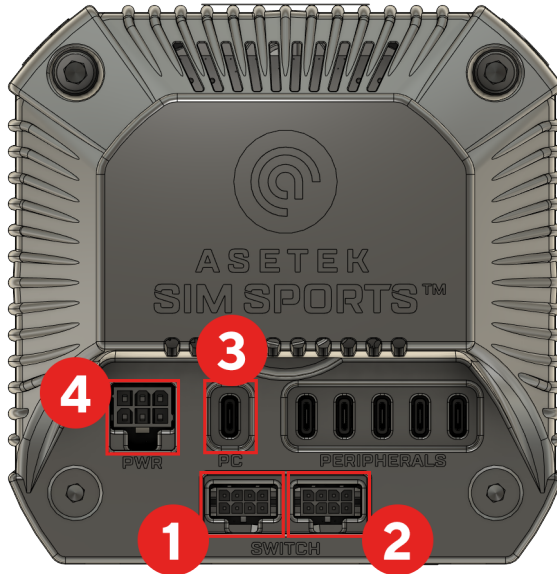
<https://www.asetek.com/simsports/product-category/accessories/wheelbase-accessories/>

If you have already bought an Asetek SimSports wheelbase mount, you can find mounting instructions here:

[https://www.youtube.com/playlist?list=PLDB\\_GeNBCcOra97JjanFEj3f9IbSFYRcr](https://www.youtube.com/playlist?list=PLDB_GeNBCcOra97JjanFEj3f9IbSFYRcr)

## 4.2 Getting started

Read and understand this manual fully. Do not operate the product if you haven't fully read or understood this manual. Check that the power cable is unplugged before proceeding.



**Important: Always connect POWER IN connector on wheelbase first before connecting power supply to the AC outlet.**

1. Connect Torque off button to wheelbase (Only applicable on Invicta and Forte).
2. Connect On/Off button to wheelbase.
3. Connect USB cable from wheelbase to PC.
4. Connect power supply to Wheelbase POWER IN connector.
5. Connect power supply to 110-240 V AC outlet with protective earth (PE).
6. Fix steering wheel (not included) with an Asetek Quick Release to the wheelbase
7. Download and install RaceHub™ from [www.asetek.com](http://www.asetek.com) website.  
This product will not operate without installing the software for safety reasons.



# 5. RaceHub™ Software

All Asetek SimSports products come with an extremely powerful yet easy-to-use piece of software that we have developed from the ground up. It is called RaceHub and will take care of your every need. RaceHub unlocks things you would not dare to dream and is continuously updated.

## 5.1 RaceHub Download

RaceHub is available for download, in its newest version, on our website:  
<https://www.asetek.com/simsports/racehub/>

### 5.1.1 RaceHub Installation

After completing the download from our website, double-click the downloaded file to initiate the installation. Follow the on-screen instructions and install them in your desired directory. Once installed, open RaceHub using the shortcut on your desktop or in your programs folder.

### 5.1.2 RaceHub Updating

RaceHub will automatically notify you if there are available updates for the software. If you want to double-check, please go to [www.asetek.com/simsports/racehub](http://www.asetek.com/simsports/racehub) and download the newest version. RaceHub has a built-in feature that allows you to update the firmware on your devices automatically.

## 5.2 RaceHub Introduction

Asetek SimSports RaceHub allows you to make a plethora of adjustments to your Asetek SimSports products. On the Wheelbase, it will allow you to adjust everything from steering range to the overall force of the wheelbase and much more.

We have made a video introduction that explains it all in more detail:  
<https://www.youtube.com/watch?v=KpRkW57vaTw>

Everything is available in a highly user-friendly interface that allows for quick and easy customization that not only gives you complete control but does it in a manner where you are constantly in focus – teaching you everything you need to know to become a power user and expert sim racer.

The settings that you choose in RaceHub will be applied to all the supported games found in section 2.3, “Compatibility”—ensuring maximum performance and precision! For further information on the RaceHub™ and its features please see our website:  
<https://www.asetek.com/simsports/racehub/>

# 6. Troubleshooting

Sometimes unforeseen issues occur. But do not worry, we are here to help.

If you are having issues we suggest consulting the FAQ on:

<https://www.asetek.com/simsports/knowledge-base-category/f-a-q-troubleshooting/>

If you are not able to find a solution on the FAQ please consult our friendly and knowledgeable support staff via [www.asetek.com/simsports/support](http://www.asetek.com/simsports/support) or through our social channels.

## 6.1 Spare Parts

We strongly advise you only use original Asetek SimSports spare parts. Failure to do so will void your warranty.

If you have questions, or do not know if you have an original part, please refer to <https://www.asetek.com/simsports/> or consult the Asetek SimSports support via: [www.asetek.com/simsports/support](http://www.asetek.com/simsports/support).

# 7. Safety

Asetek SimSports® wheelbases are intended for professional use. Usage under other conditions is your own responsibility.

Always follow these warnings and safety precautions when using an Asetek SimSports Wheelbase.

## 1. READ AND RETAIN ALL INSTRUCTIONS BEFORE USING THE ASETEK SIMSPORTS WHEELBASE.

### **Mounting instructions:**

[https://www.youtube.com/playlist?list=PLDB\\_GeNBCcOra97JjanFEj3f9IbSFYRcr](https://www.youtube.com/playlist?list=PLDB_GeNBCcOra97JjanFEj3f9IbSFYRcr)

### **Software instructions:**

<https://www.youtube.com/watch?v=KpRkW57vaTw>

2. COMPLETELY REMOVE HANDS FROM WHEEL upon forceful torque feedback or impact due to RISK OF BODILY INJURY from high torque effects.
3. USE EMERGENCY OFF BUTTON when necessary to cut power to the motor and stop further motion, rotation, and torque.
4. DO NOT ATTEMPT TO STOP A FREELY ROTATING WHEEL BY GRABBING OR HOLDING IT. NEVER reach THROUGH the wheel with fingers, hands, or arms due to the risk of sudden or unexpected rotation. RISK OF BODILY INJURY due to rotating parts.
5. KEEP ITEMS AWAY FROM WHEEL such as loose clothing, jewelry, hair, cables/ cords/wires, or other easily tangled objects that can get caught in strong pull force of rotating wheel and shaft. RISK OF ENTANGLEMENT AND INJURY due to rotating parts.
6. DO NOT TOUCH MOTOR UNIT during or shortly after use as motor gets very hot. RISK OF BURN INJURY.
7. RISK OF ELECTRIC SHOCK OR FIRE. For indoor use only. Use only the power cord that comes with the wheelbase. DO NOT USE power cord if damaged, split or broken cords, wires or plugs. DO NOT expose product or power cord to rain or damp environments. Do not use in direct sunlight and do not expose to any heat sources. Avoid using during lightning storms. Recommended indoor temperature range: 15°C ~ 35°C/59°F ~ 95°F.
8. THIS IS NOT A TOY. NOT FOR USE BY PERSONS UNDER 15 YEARS OF AGE OR THOSE WITH REDUCED PHYSICAL, SENSORY, OR MENTAL CAPABILITIES, OR LACK OF EXPERIENCE AND KNOWLEDGE. Users must be physically and mentally able to engage in a high torque force feedback simulated driving experience.
9. ADULT SUPERVISION REQUIRED AT ALL TIMES WHEN OPERATING THE ASETEK SIMSPORTS WHEELBASE.
10. KEEP PEOPLE AND PETS AWAY WHEN THE ASETEK SIMSPORTS WHEELBASE IS BEING OPERATED.



11. DO NOT TAMPER WITH, DISASSEMBLE, OR OPEN any of the parts or components of the Asetek SimSports Wheelbase as this can cause serious injury and will void the product warranty.
12. DO NOT ALTER, MODIFY, OVERRIDE, or DEFEAT the software or hardware components of the Asetek SimSports Wheelbase. Any unauthorized modification could impair the function and/or safety of this product and result in serious injury and will void the product warranty. Use of accessories not approved or recommended by the manufacturer can potentially cause injuries.
13. CONSULT INSTRUCTION MANUAL FOR SAFE MOUNTING OF MOTOR UNIT.
14. TAKE BREAKS TO AVOID RISK OF MOTION INJURY AND STRAIN. Take a 5-minute break every 20 minutes [or “take a 10-to15-minute break every hour”] even if you don’t think you need it. If your hands, wrists, arms, shoulders, neck, or eyes become tired or sore while playing, or if you feel symptoms such as tingling, numbness, burning or stiffness, stop and rest for several hours before playing again. Consult a physician if any of these symptoms persist.
15. STOP USING PRODUCT IF YOU FEEL DIZZY OR NASEOUS. RISK OF MOTION SICKNESS. Do not drive or engage in other demanding activity until you feel better.
16. This product is intended for simulated driving only. Wait 1 hour after using before driving an actual vehicle.
17. This product has magnets which may interfere with pacemakers, defibrillators and programmable shunt valves or other medical devices. Do not put this product close to these medical devices and the person who use any of these medical devices. Consult your doctor before using this product, if you have any concerns. []

If you are in doubt about any of the above listed items, please reach out to our customer service at [hello@aseteksimsports.com](mailto:hello@aseteksimsports.com) with any questions you may have.

## 8. De-commissioning & Sustainability

At Asetek we are fiercely committed to making the world a sustainable place. You can read more about Asetek’s sustainability efforts, including our sustainability reports, here: [www.asetek.com/company/sustainability](http://www.asetek.com/company/sustainability)



This symbol indicates that this product should not be thrown away with other household waste throughout the EU. To prevent possible harm to the environment or human health by uncontrolled waste disposal, you are responsible for recycling it so that it can promote the sustainable reuse of raw materials. To return your used product, you can use the regular return and collection systems.

## 8.1 Packaging

All packaging is made of paper and cardboard. All our cardboard and paper products are labeled with the FSC mark, ensuring maximum reusability and that the forests are sustainably forested. Furthermore, we regularly check our vendors to make sure they are upholding their commitments.

About FSC: [www.fsc.org/en/fsc-labels](http://www.fsc.org/en/fsc-labels)

If you need to dispose of your packaging, please use the appropriate paper waste stream in your country, to dispose of the packaging. Naturally, we hope you want to keep it around – we are quite proud of it.

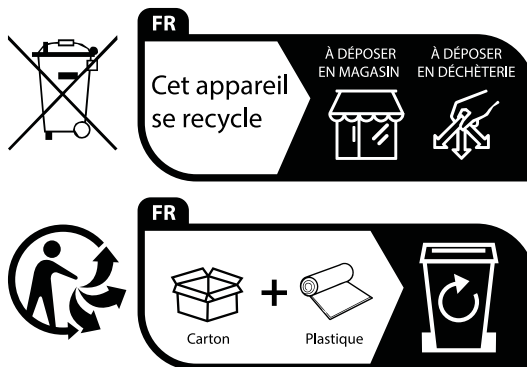
## 8.2 Product

Asetek SimSports is committed to making products that will last. However, we also know that sometimes things break, and that should not result in a scrap and forget, producing even more e-waste to our planet. That is why we are dedicated to supporting you and all other users with spare parts where possible, and in case of parts of the product defuncting, we offer return shipping of the part along with a new service part. We will then make sure the original part is de-commissioned in an environmentally sound manner.

If you feel uncertain about how to recycle any Asetek SimSports product, we suggest getting in touch with our dedicated customer support team, who will happily help you.

Contact them here: [www.asetek.com/simsports/support](http://www.asetek.com/simsports/support)

Any waste aluminum from production is re-used minimizing waste.



Points de collecte sur [www.quefairedemesdechets.fr](http://www.quefairedemesdechets.fr)  
Privilégiez la réparation ou le don de votre appareil !

# 9. Declaration of conformity

We, Asetek, as manufacturer, declare that the products from the brand Asetek, produced in Denmark are tested according to all relevant CE standards/regulations and passed all tests.

The complete Declaration of Conformity can be found and downloaded via:  
<https://www.asetek.com/simsports/declarations/>

**DECLARATIONS**

Below you will find declarations that specify how our products are in conformity with legislation. Download the below documents to learn more about our declarations of conformity.

**EU DECLARATION OF CONFORMITY**

[DOWNLOAD](#)



**ASETEK**  
**SIM SPORTS®**

**PERFORMANCE. PRECISION. PASSION.**