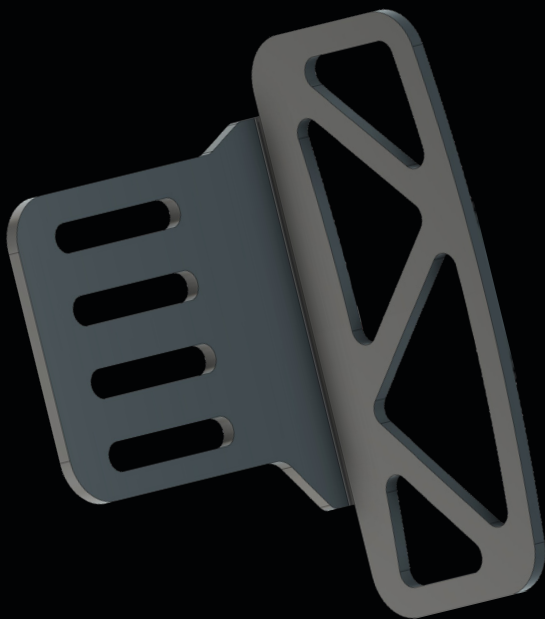


Universal Footrest Installation Guide



ASETEK
SIM SPORTS®

Box content:

- Universal Footrest
- Two (2) allen screws

Note: Use the Allen key (3 mm) supplied with your Asetek SimSports® pedal set

Step 1:

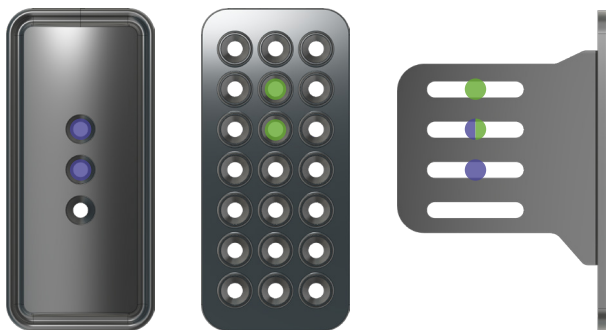
Notice: do not use a power drill, as this may damage the screws

Remove pedal face plate from the throttle pedal arm by unscrewing the screws using the allen key, supplied with the Asetek SimSports® pedal set.



Step 2:

Align the footrest's holes, in your preferred position, with the holes in the pedal face plate.



Step 3.

Insert and fasten the two (2) allen screws with the allen key, to mount the throttle footrest to the pedal face plate



Note: The screws can bite hard, so be careful not to overtighten or have the tool slip. Recommended torque: 2nm

Step 4:

Start racing!