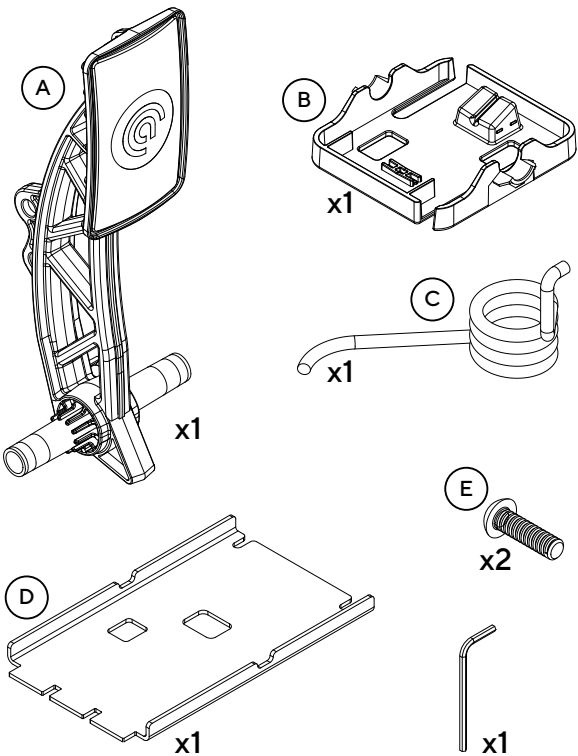


Box Contents:



Product Code: 40-014-0014001
Product name: Initium™ Clutch Pedal

Congratulations on your new
Asetek Racing™ Initium™
Clutch Pedal



This manual is written for the end-user of the Asetek Racing™ Initium™ Clutch Pedal and contains all the information required to correctly and safely install and use your new product.

WARNING:

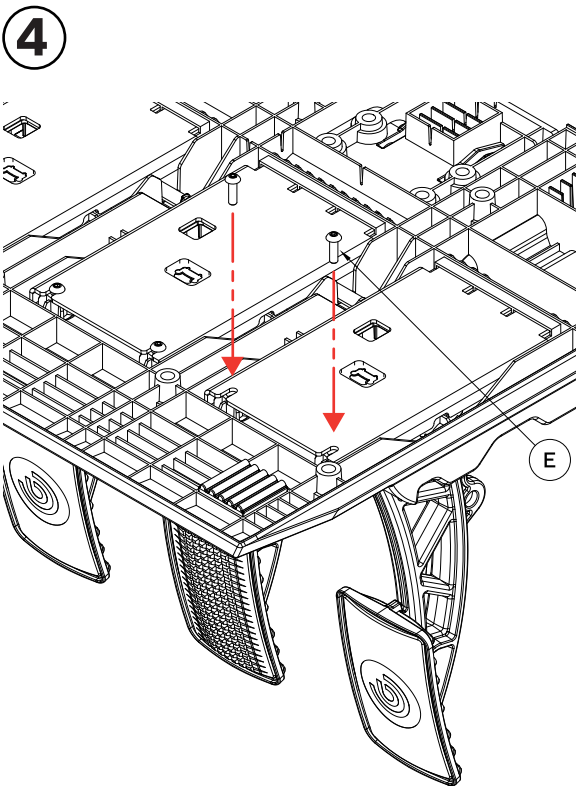
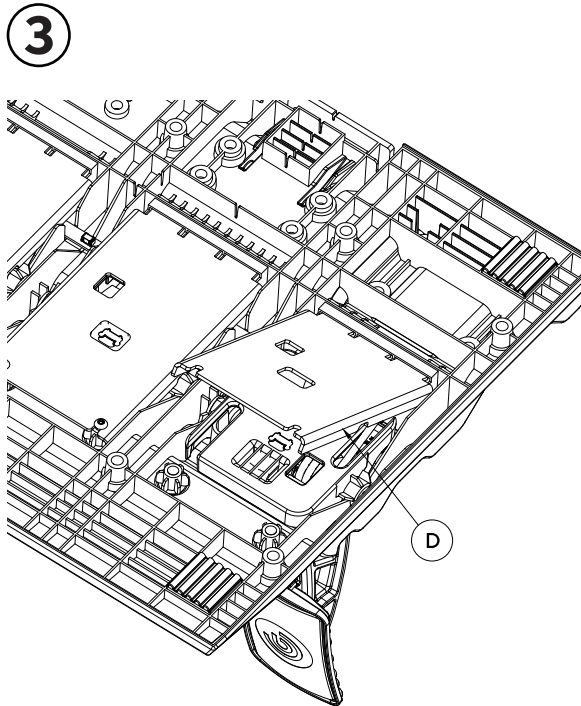
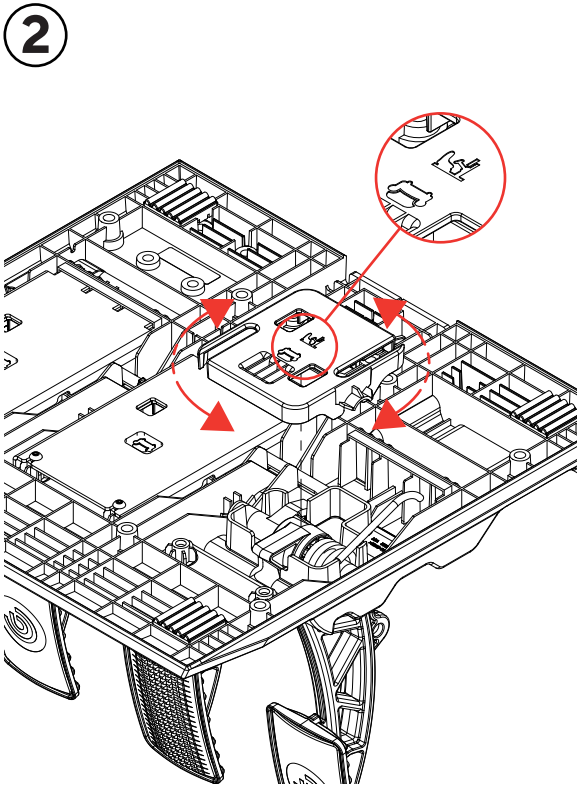
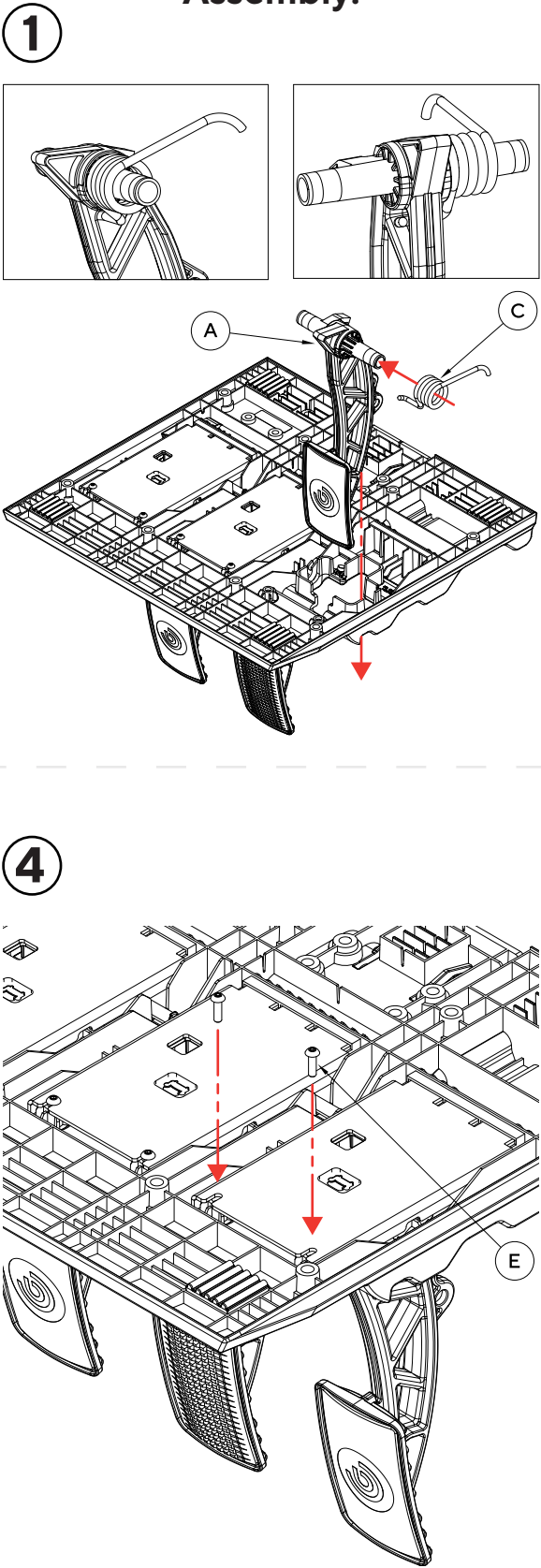
- Choking Hazard – Small parts. Not for children under 3 years.
- Do not use power tools to assemble or attach the Initium™ Clutch Pedal to avoid damaging the parts or overtightening the screws.
- Do not use spare parts or accessories that Asetek SimSports® has not approved.
- Mounting and/or use of any parts in a vehicle will void the warranty.
- Do not disassemble this product beyond what is described in the product manual.
- Make sure all parts are secured tightly before use.
- Please be aware that edges on the rod clevis can be sharp.
- Assembly of Initium™ Clutch Pedal is allowed only by an instructed person who understands and follows the above safety instructions.
- If the Initium™ Clutch Pedal becomes damaged in any way, stop using it immediately and contact Asetek support or the reseller from whom you bought it.
- Operating environment:
 - 0°C – 40°C room temperature, non-condensing humidity
 - Indoor use only

Warranty
Asetek SimSports® offers 24 Month warranty on all products.

Need Assistance?



Assembly:



De-commissioning & Sustainability:

At Asetek we are fiercely committed to making the world a sustainable place. www.asetek.com/company/sustainability

Packaging
All packaging is made of paper and cardboard. All our cardboard and paper products are labeled with the FSC mark, ensuring maximum reusability and that the forests are sustainably forested. Furthermore, we regularly check our vendors to make sure they are upholding their commitments.

About FSC: www.fsc.org/en/fsc-labels

If you need to dispose of your packaging, please use the appropriate paper waste stream in your country, to dispose of the packaging. Naturally, we hope you want to keep it around – we are quite proud of it.

Product
If you feel uncertain about how to recycle any Asetek SimSports® or Asetek Racing™ product, we suggest getting in touch with our dedicated customer support team, who will happily help you.

