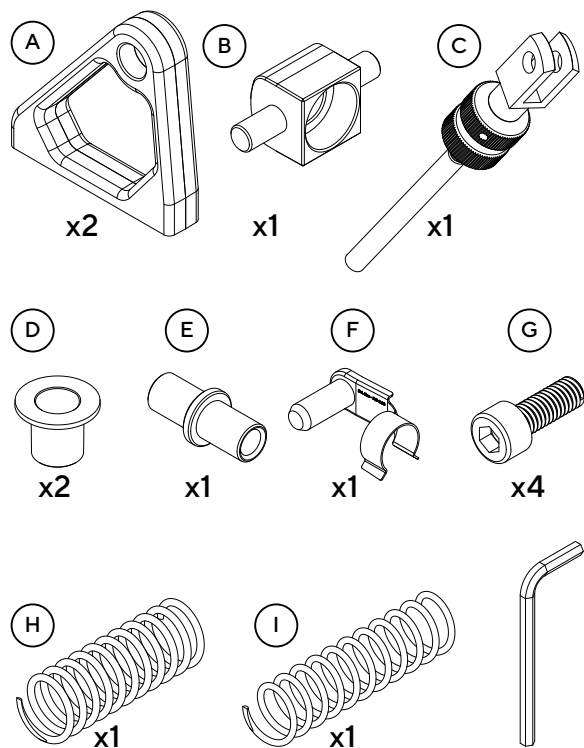


## Box Contents:



Product code: 40-014-0014003  
Product name: Initium™ Throttle Upgrade

## Congratulations on your new Asetek Racing™ Initium™ Throttle Upgrade



**ASETEK**  
**RACING**

This manual is written for the end-user of the Asetek Racing™ Initium™ Throttle Upgrade and contains all the information required to correctly and safely install and use your new product

**INITIUM™**

## WARNING:

- Choking Hazard – Small parts. Not for children under 3 years.
- Do not use power tools to assemble or attach the Initium™ Throttle Upgrade to avoid damaging the parts or overtightening the screws.
- Mounting and/or use of any parts in a vehicle will void the warranty.
- Do not disassemble this product beyond what is described in the product manual.
- Make sure all parts are secured tightly before use.
- Please be aware that edges on the rod clevis can be sharp.
- Assembly of the Initium™ Throttle Upgrade is allowed only by an instructed person who understands and follows the above safety instructions.
- If the Initium™ Throttle Upgrade becomes damaged in any way, stop using it immediately and contact Asetek support or the reseller from whom you bought it.
- Operating environment:
  - 0°C – 40°C room temperature, non-condensing humidity
  - Indoor use only

### Warranty

Asetek SimSports® offers 24 Month warranty on all products.

## Need Assistance?

Support



Knowledge base



Videos



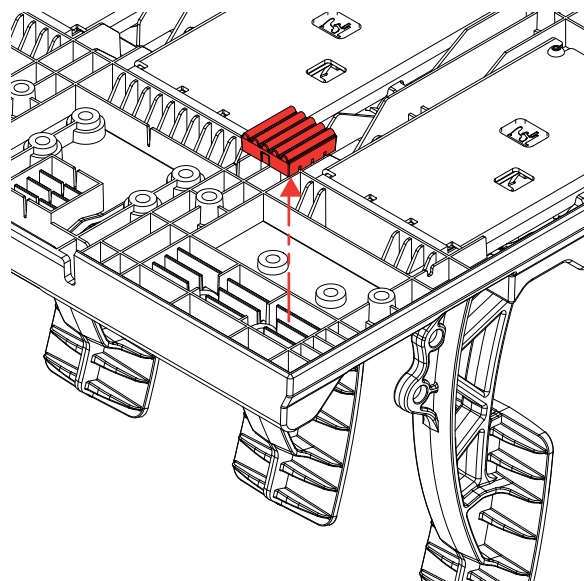
Manual Version 1.0

## Assembly:

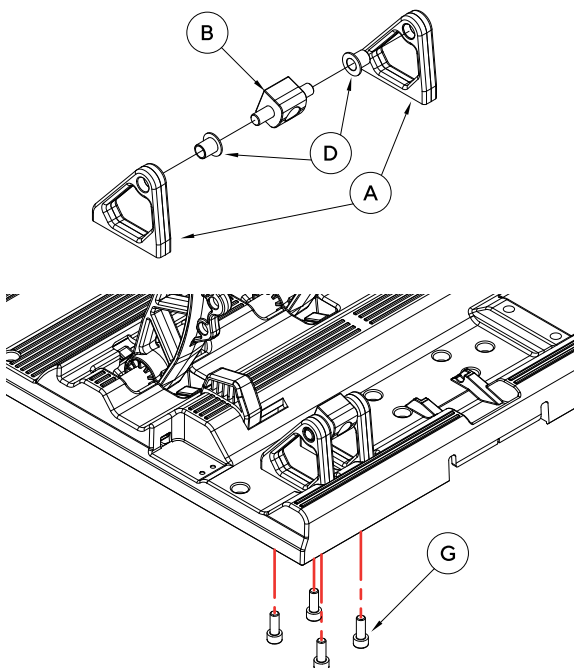


Pedals with this upgrade kit can only be used in Cockpit Mode. Follow the instructions in the pedal manual on how to put the pedals in the Cockpit mode.

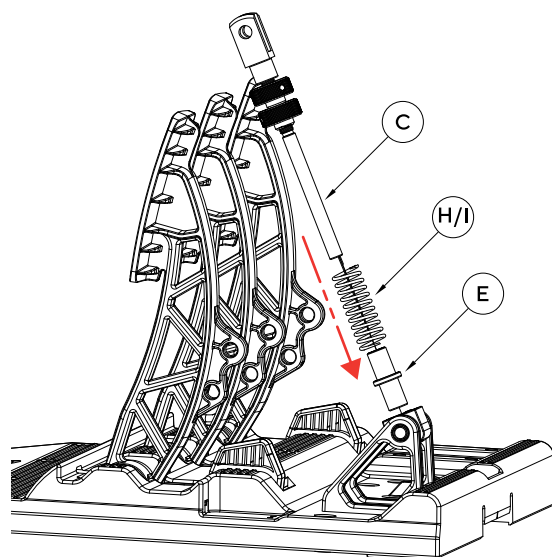
1



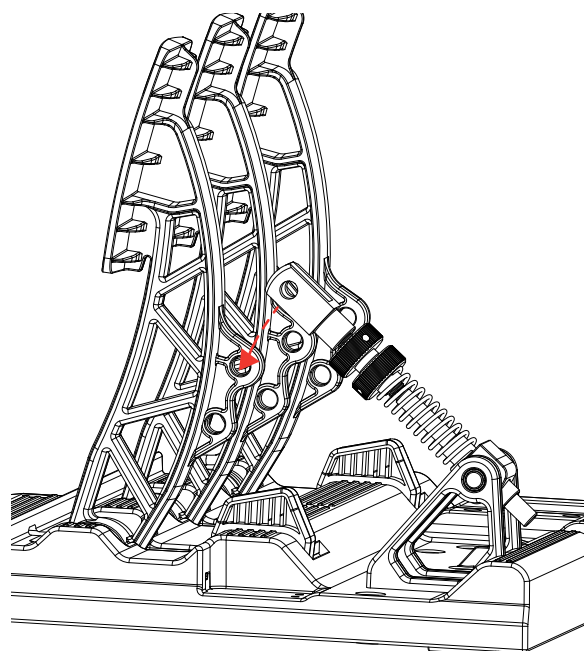
2



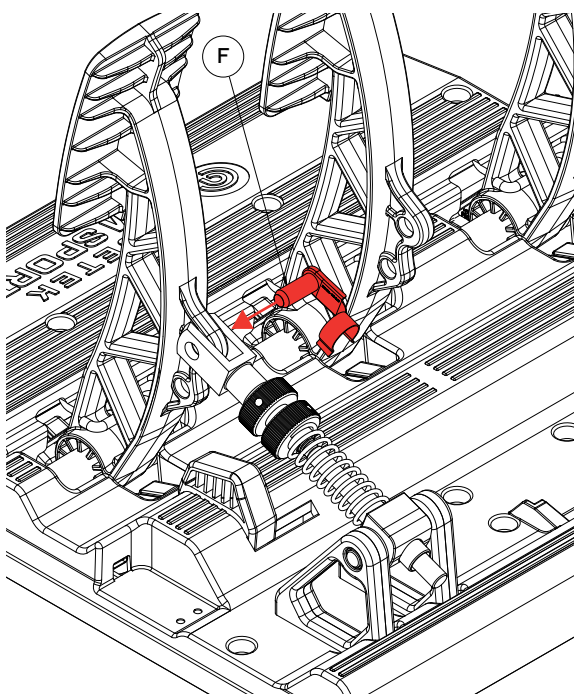
3



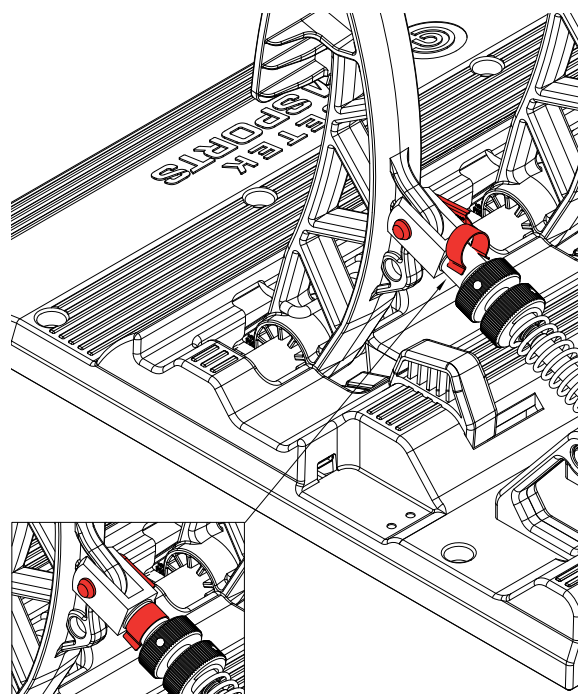
4



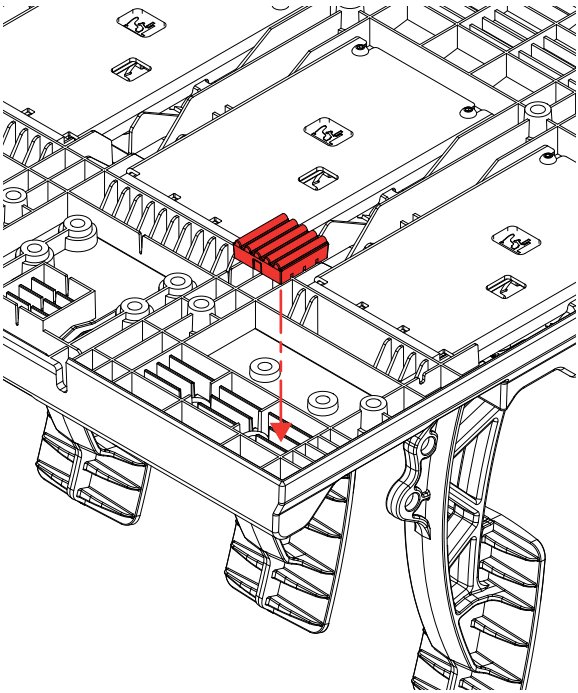
5



6

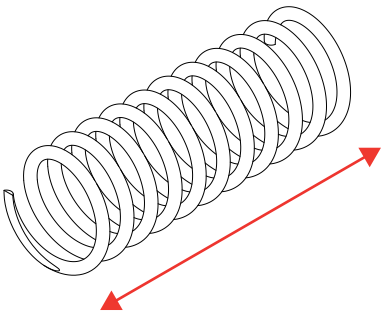


7

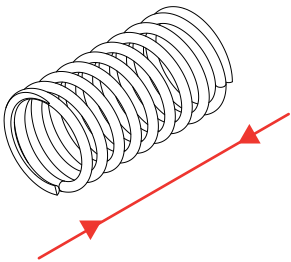


# Settings: Spring Hardness

1. Hard Spring = Hard throttle pedal

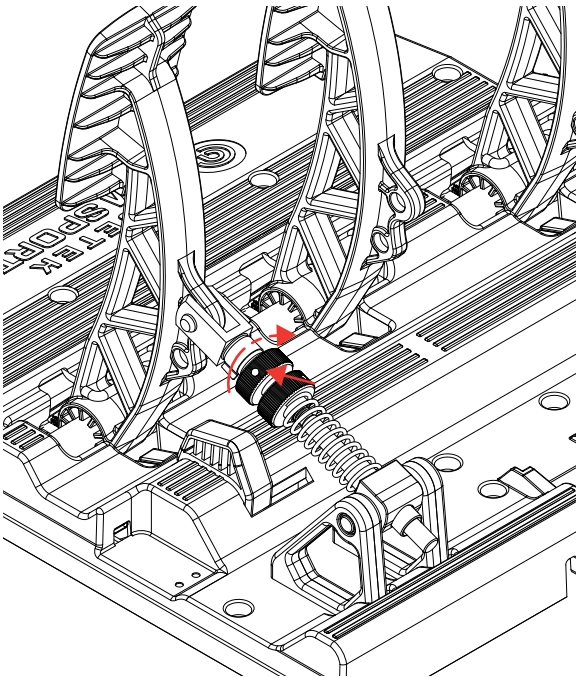


2. Soft Spring = Soft throttle pedal

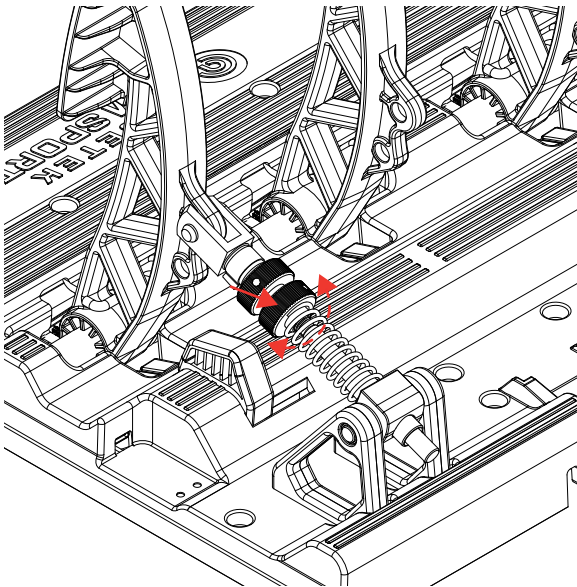


# Settings: Preload Adjustment

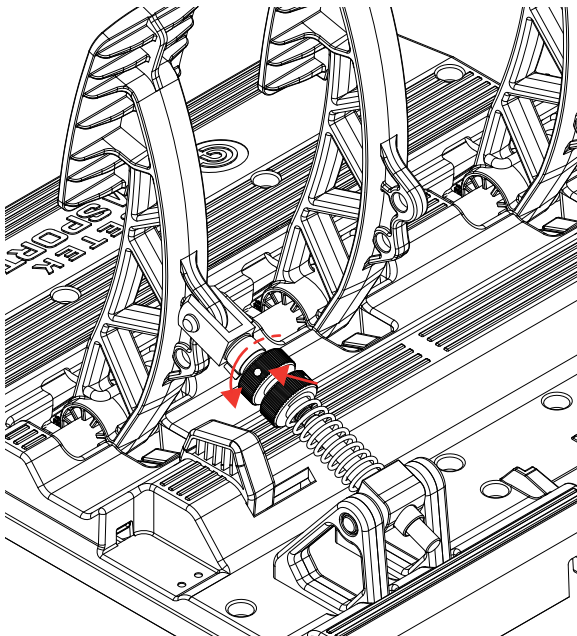
1. Turning clockwise, loosen the uppermost thumbnut. It is the one closest to the pedal itself.



2. Adjust preload on the spring by turning the bottom thumbnut (in contact with the spring):  
a. Counterclockwise to tighten the preload, making the throttle require more force to engage.  
b. Clockwise to reduce the preload, making the throttle require less force to engage.



3. Turn the uppermost thumbnut counterclockwise to retighten it, locking the bottom thumbscrew in its position.



4. Calibrate your Throttle in RaceHub™.

# De-commissioning & Sustainability:

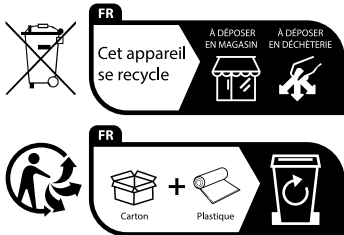
At Asetek we are fiercely committed to making the world a sustainable place. [www.asetek.com/company/sustainability](http://www.asetek.com/company/sustainability)

**Packaging**  
All packaging is made of paper and cardboard. All our cardboard and paper products are labeled with the FSC mark, ensuring maximum reusability and that the forests are sustainably forested. Furthermore, we regularly check our vendors to make sure they are upholding their commitments.

About FSC: [www.fsc.org/en/fsc-labels](http://www.fsc.org/en/fsc-labels)

If you need to dispose of your packaging, please use the appropriate paper waste stream in your country, to dispose of the packaging. Naturally, we hope you want to keep it around – we are quite proud of it.

**Product**  
If you feel uncertain about how to recycle any Asetek SimSports® or Asetek Racing™ product, we suggest getting in touch with our dedicated customer support team, who will happily help you.



Points de collecte sur [www.quefairedelesdechets.fr](http://www.quefairedelesdechets.fr)  
Privilégiez la réparation ou le don de votre appareil!